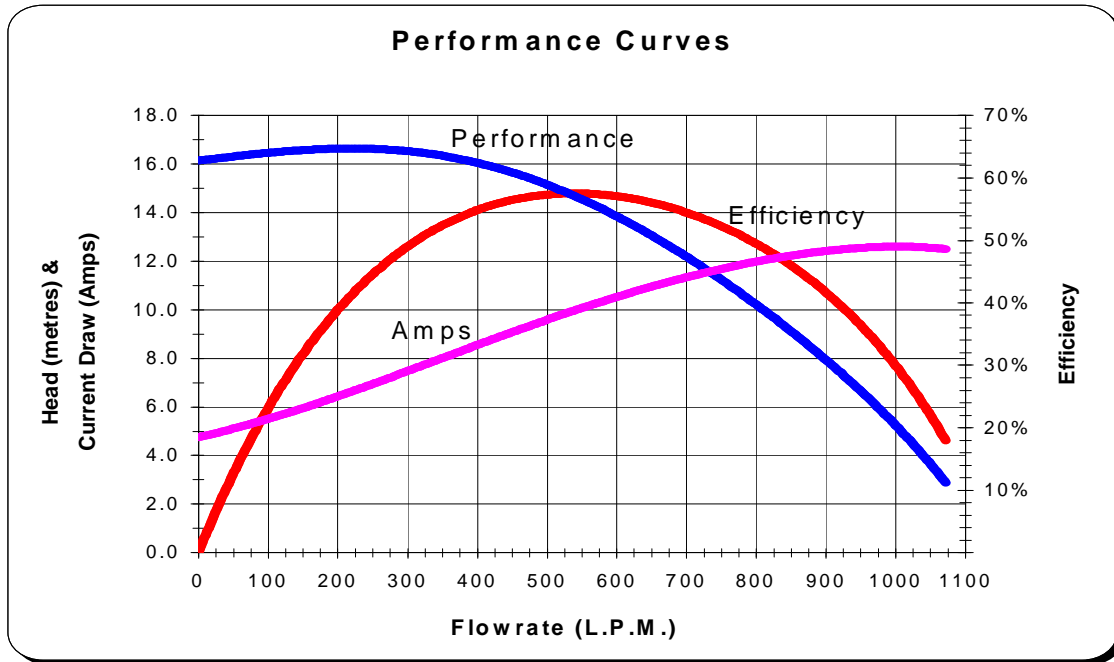




## Product Specification Sheet Model XP2E903014

Aqua-Flo's *energy conscience* offering, the XP2e, provides greater flow rates than the XP2 while improving the overall energy efficiency of the spa, reducing operating costs. The XP2e allows for the use of more jets per pump and in some applications, the elimination of the diverter valve.



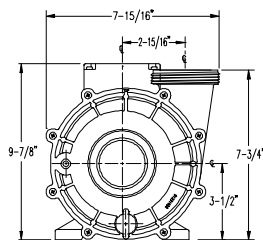
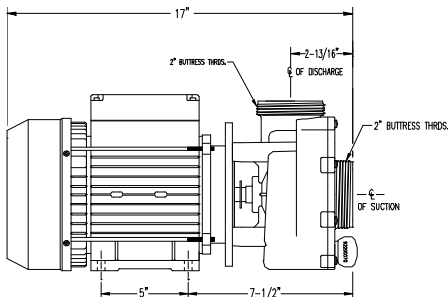
These performance curves are a result of in-lab testing, actual performance may vary based on manufacturing tolerances and application.

**Performance Table**

	Open	8	10	12	14	16
Metres						
LPM	1072	897	810	710	587	411
<b>BEP</b>	<b>568 LPM</b>					

**Motor Data**

<b>Manufacturer:</b>	EMG	<b>AF Part Number:</b>	93556690	<b>Model:</b>	N/A
<b>HP:</b>	3.0	<b>FLA:</b>	12.8-12.3	<b>Volts:</b>	220-240
<b>Freq:</b>	50	<b>Phase:</b>	1	<b>Frame:</b>	90
				<b>Speed:</b>	1



AQUA-FLO, LLC

PUMPS FOR THE LEISURE WATER INDUSTRY™

5651 Schaefer Ave., Chino, CA USA 91710 TEL: (909) 591-7453 FAX: (909) 627-5660 [www.aqua-flo.com](http://www.aqua-flo.com)

Call for Pricing